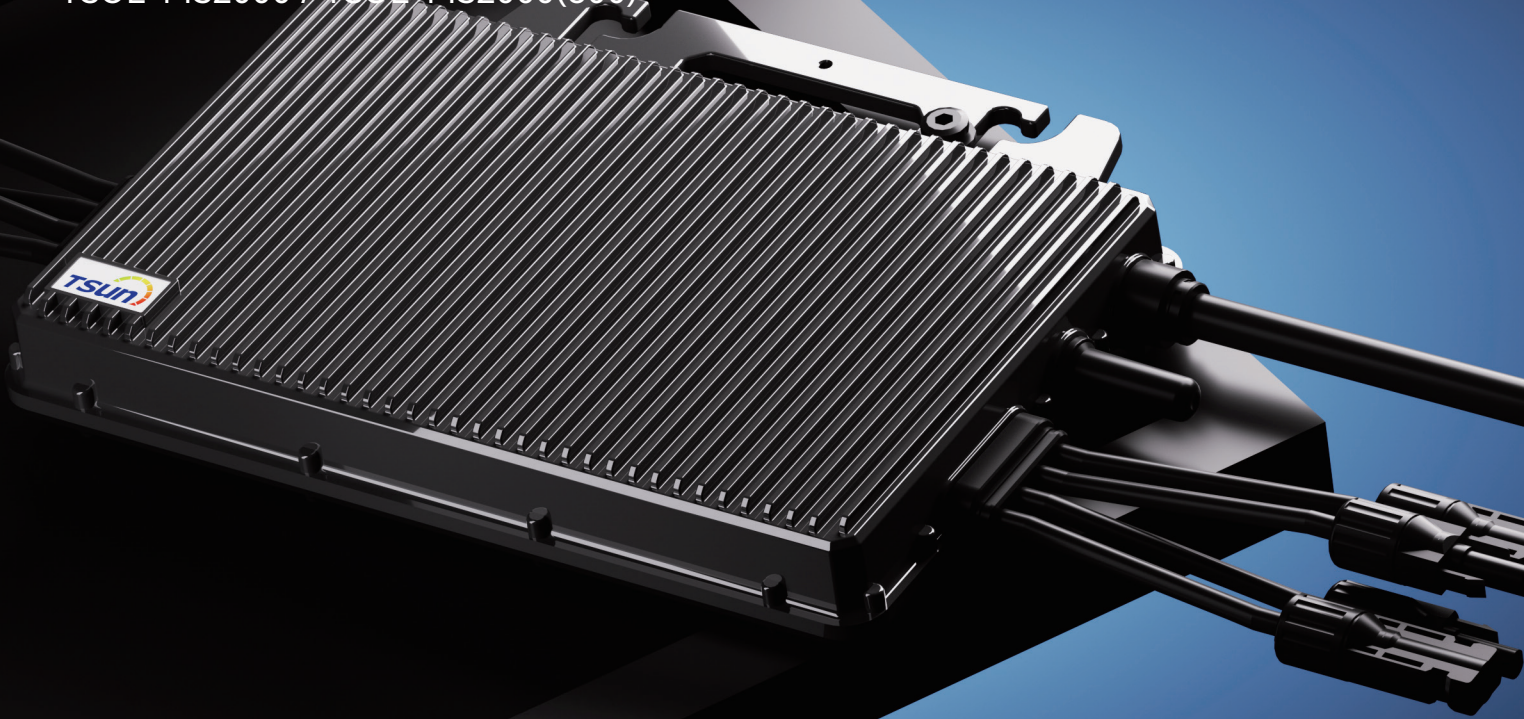


TSUN Balcony Microinverter

TSOL-MS1600 / TSOL-MS1800 /
TSOL-MS2000 / TSOL-MS2000(800)



Maximized Efficiency

Individual optimization, se-parate dedicated MPPT for each panel.

New topology design, max. efficiency up to 96.7%.

Flexibility

Suitable for TSOL-ESK series AC module solution.

Plug & play installation, Easy to install.

Safety

Max. DC voltage 60V. No threat for high DC voltage.

Integrated LoM protection function. Ensure the safety of power grid.

Reliability

Die casting design and glue filling technology. Better thermal dissipation.

Standard 12 years warranty, Quality guaranteed.

CE VDE 4105 EN 50549

TSUNESS Co., Ltd

sales@tsun-ess.com www.tsun-ess.com +86-512-66186028

Technical Data

Model	TSOL-MS1600	TSOL-MS1800	TSOL-MS2000	MS2000(800)
Input [DC]				
Recommended Module Power [W]	300-700+	300-700+	300-700+	300-700+
Start up Voltage [V]	22	22	22	22
MPPT Voltage Range [V]	16-60	16-60	16-60	16-60
Nominal DC voltage [V]	42	42	42	42
Max. Input Voltage [V]	60	60	60	60
Max. Input Current [A]	4*16	4*16	4*16	4*16
Max. Input Short-circuit Current [A]	25	25	25	25
Quantity of MPPT	4	4	4	4
Number of Inputs per MPPT	1	1	1	1
Output [AC]				
Nominal Continuous Output Power [W]	1600	1800	2000	800
Nominal Output Current [A]	7.0	7.8	8.7	3.5
Max. Output Current [A]	8.0	9.0	10.0	4.0
Nominal Output Voltage/Range [V]	220/230/240, L/N/PE			
Nominal Frequency [Hz]	50/60			
Power Factor	>0.99 default, 0.8 leading ... 0.8 lagging			
MPPT efficiency	99.8%			
CEC Weighted Efficiency	96.7%			

Mechanical Data

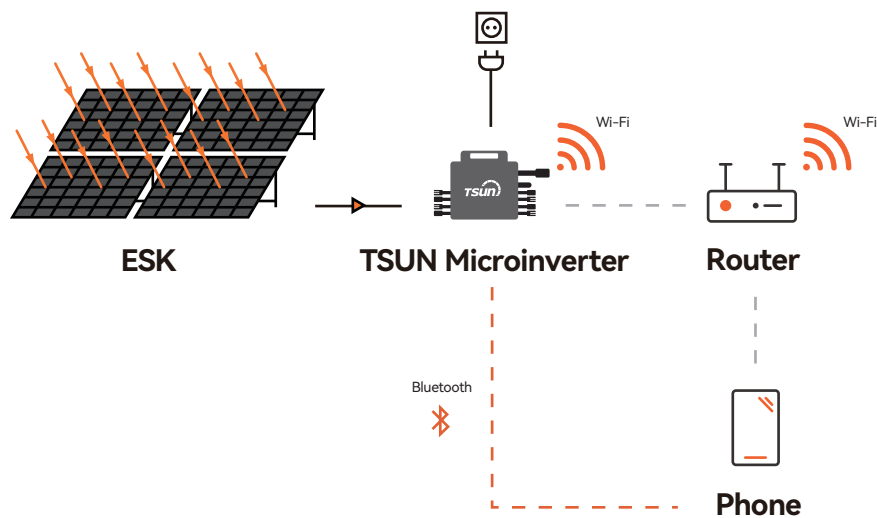
Dimensions [WxHxD mm]	331 * 261 * 44
Weight [kg]	5

General Data

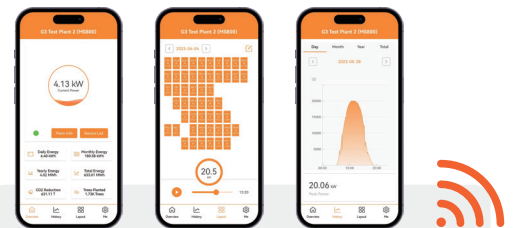
Night Time Power Consumption	<50 mW
Communication	WiFi module
Type of Enclosure	IP67
Cooling	Natural Convection
Type of isolation	Galvanically Isolated HF Transformer
Operating Ambient Temperature Range	-40 ~ +65 °C (derating of over 50°C Ambient Temperature@ PV input 30V)
Relative Humidity	100%
Max. Operating Altitude Without Derating [m]	2000
Over voltage category	III(Mains), II(PV)
Compliance	

※ The AC voltage and frequency range may vary depending on specific country grid.

Diagram



Monitoring Platform



TSUN Smart is an **Energy Monitoring Mobile Application Software**. Users can use TSUN Smart to monitor the real-time operation of the entire pv power generation system.

Monitor Generation Data of Solar Plant

One-button to Connect Network

Power Generation Statistics

Module-level Monitoring System

Fast Network Configuration

For more information, visit / contact us at www.tsun-ess.com

© 2024 TSUNESS . All rights reserved. All specifications are subject to change without prior notice